

# Attitudes Towards Refugees & Immigrants in Greece.

A comparative analysis of nation-wide and locally contacted surveys in medium-small size Greek cities.



Source: Wikimedia Commons

**Authors:**

Paschalis Arvanitidis,  
Sofia Gourgouliani,  
George Papagiannitsis (p) &  
Penelope Vergou

## **Research background:**

- Over the last years Greece has received a large number of refugees and immigrants.
- A considerable amount of different policies at central and local level seeks to manage and integrate these people.
- These efforts focus mainly on the issue of spatial settlement and housing.
- There are serious issues of acceptance of refugees and/or immigrants by the local population.
- A number of research studies explore the attitudes of local population towards immigrants and refugees.

## **Research aim / research question:**

To explore the attitudes towards immigrants –refugees of residents of small and medium cities and to what extent these differ from the national average.

In other words, do localities hold different positions towards immigrants –refugees as compared to the national average?

## Comparative analysis of specific questions between a nation-wide and a locally conducted survey

Research title	The immigration-refugee issue in Greece	The integration of refugees into local society: the case of small and medium-sized cities
Conducted by	MARC S.A.	Dr. Paschalis Arvanitidis (MEng, MLE, PhD), Associate Professor in «Institutional Economics», at the Department of Economics (UTH) <ul style="list-style-type: none"> <li>• Dr. Sofia Gourgouliani,</li> <li>• George Papagiannitsis (p), PhD Candidate</li> <li>• Dr. Penelope Vergou</li> </ul>
Conducted for or through	diaNOEsis	Operational Program "Human Resources Development, Education and Lifelong Learning" – European Social Fund
Financing	diaNOEsis	Operational Program "Human Resources Development, Education and Lifelong Learning" – European Social Fund
Size of sample	<b>1005</b>	<b>1226</b> (427-Volos) (439 – Larisa) (326 – Trikala)
Time period	22 – 28 Feb 2019	December 2020 – February 2021
Research area	Greece	Cities of Volos, Larisa and Trikala (Greece)
Sampling method	Multistage random sampling using quota based on gender, age and geographical distribution.	Probability sampling
Data collection method	Computer Assisted Telephone Interviewing	Individually completed questionnaires
Margin of error	±3%	±2.79% (population: 400.000, Percentage 50)

# Sample demographics

## diaNOEsis

## University of Thessaly

	diaNOEsis		University of Thessaly	
<b>Gender</b>	<b>Male</b>	49.80%	<b>Male</b>	43.55%
	<b>Female</b>	50.20%	<b>Female</b>	56.12%
<b>Age</b>	<b>17-24</b>	9.10%	<b>17-24</b>	15.44%
	<b>25-34</b>	13.60%	<b>25-34</b>	23.49%
	<b>35-44</b>	17.90%	<b>35-44</b>	23.66%
	<b>45-54</b>	17.70%	<b>45-54</b>	20.63%
	<b>55-64</b>	15.50%	<b>55-64</b>	11.82%
	<b>65 or more</b>	26.20%	<b>65 or more</b>	4.95%
<b>Educational level</b>	<b>Compulsory education</b>	8.80%	<b>Compulsory education</b>	6.12%
	<b>High school</b>	38.10%	<b>High school</b>	19.98%
	<b>University</b>	44.20%	<b>University</b>	55.14%
	<b>Master's degree /PhD</b>	8.70%	<b>Master's degree /PhD</b>	15.66%
	<b>N/A</b>	0.10%	<b>N/A</b>	3.10%
<b>Monthly income of household (€)</b>	<b>&lt;500</b>	12.80%	<b>&lt;500</b>	6.04%
	<b>501-1000</b>	30.00%	<b>501-1000</b>	28.38%
	<b>1001-1500</b>	22.40%	<b>1001-1500</b>	20.88%
	<b>1501-2000</b>	14.20%	<b>1501-2000</b>	13.54%
	<b>&gt;2000</b>	10.20%	<b>&gt;2000</b>	27.41%
	<b>N/A</b>	10.30%	<b>N/A</b>	3.75%
<b>Occupation</b>	<b>Employee or self-employed</b>	42.70%	<b>Employee or self-employed</b>	71.20%
	<b>Household</b>	8.00%	<b>Household</b>	4.08%
	<b>Retired</b>	27.80%	<b>Retired</b>	6.43%
	<b>Unemployed</b>	11.10%	<b>Unemployed</b>	6.97%
	<b>Student</b>	7.90%	<b>Student</b>	4.08%
	<b>Other</b>	2.50%	<b>Other</b>	-

## diaNOEsis

## University of Thessaly

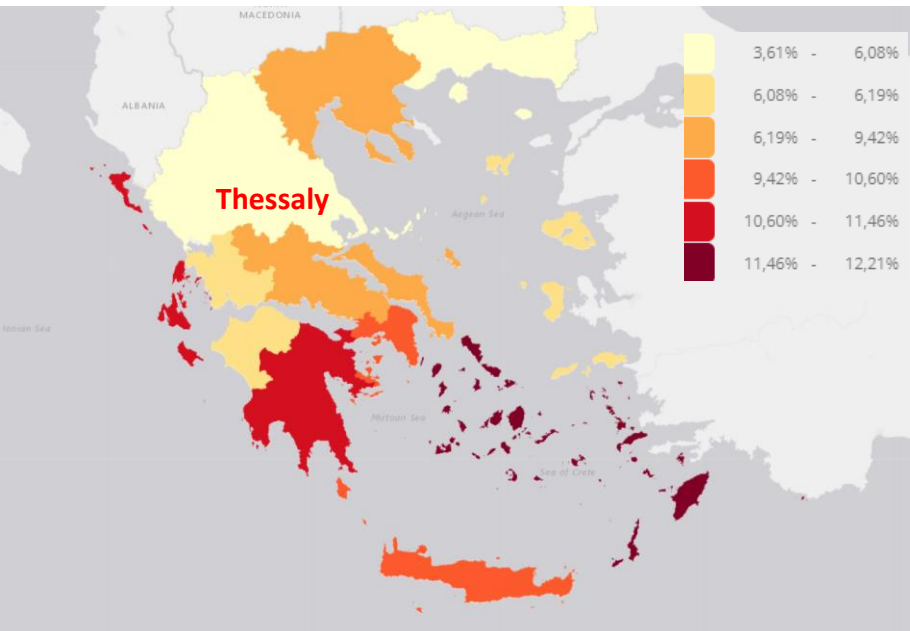
<b>Question 1</b>	Which of the following issues do you consider the most important for Greece? (Choice of up to 2)	Which of the following issues do you consider the most important for Greece? (Choose of up to 3)
<b>Question 2</b>	In your opinion, the number of immigrants in Greece is: (Likert scale ranging between extremely low and extremely high)	In your opinion, the number of immigrants in Greece is: (Likert scale ranging between extremely low and extremely high)
<b>Question 3</b>	What is the impact of immigrants on the Greek economy? (Likert scale ranging between negative and positive)	What is the impact of immigrants on the Greek economy? (Likert scale ranging between negative and positive)
<b>Question 4</b>	Do you consider that the presence of immigrants in Greece culturally enriches Greek society or poses threats to our national identity?	Do you consider that the presence of immigrants in Greece enriches or undermines culturally Greek society? (Likert scale)
<b>Question 5</b>	Do you consider that the presence of immigrants in Greece increases crime or there is no difference between Greeks and foreigners?	Do you consider that the presence of immigrants in Greece increases or decreases crime? (Likert scale)
<b>Question 6</b>	Do you think that Greece's attitude towards dealing with refugee flows should be: (Multiple choice – As is today, Stricter, Less Strict)	Do you think that Greece's attitude towards dealing with refugee flows should be: (Multiple choice – allow to many of them to come and stay, allow few, allow less than few, do not allow staying to anyone)

The above questions have also been compared in relation to:  
 Age // Gender // Level of education // Political view – orientation // Monthly income of household

## Research areas



## Percentage of foreign population (2011)



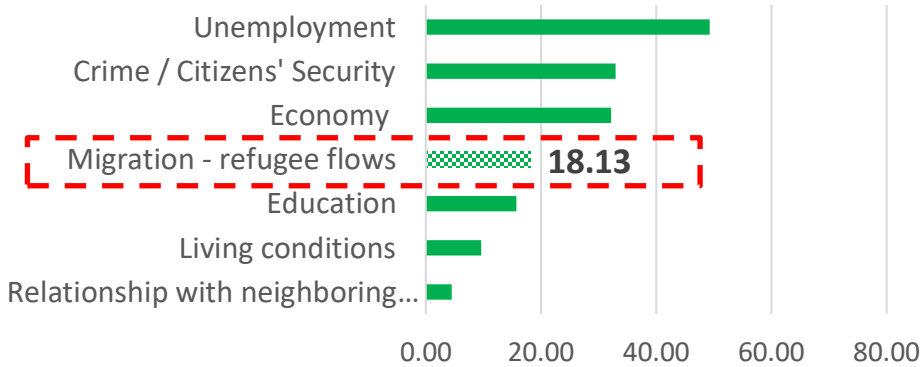
## Percentage of foreigners on the total population (2011)

<b>Greece</b>	8.43%
<b>Region of Attica</b>	10.60%
<b>Region of Thessaly</b>	6.08%
<b>Municipality of Volos</b>	6.78%
<b>Municipality of Larisa</b>	4.95%
<b>Municipality of Trikala</b>	4.14%

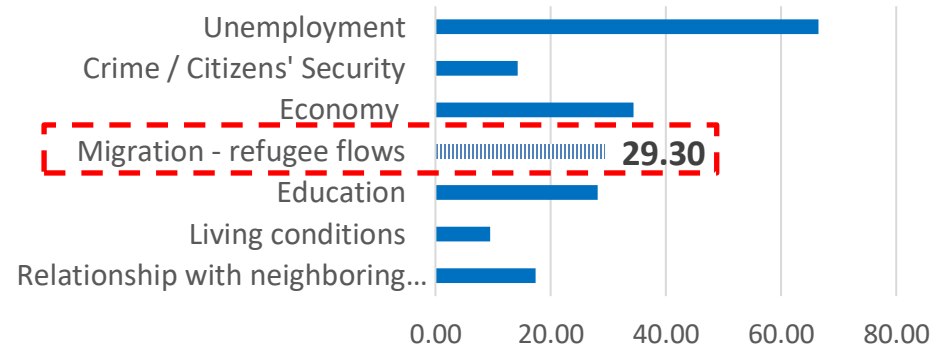
# Comparative analysis – Question 1

**Question 1:** Which of the following issues do you consider the most important for Greece? (quotient)

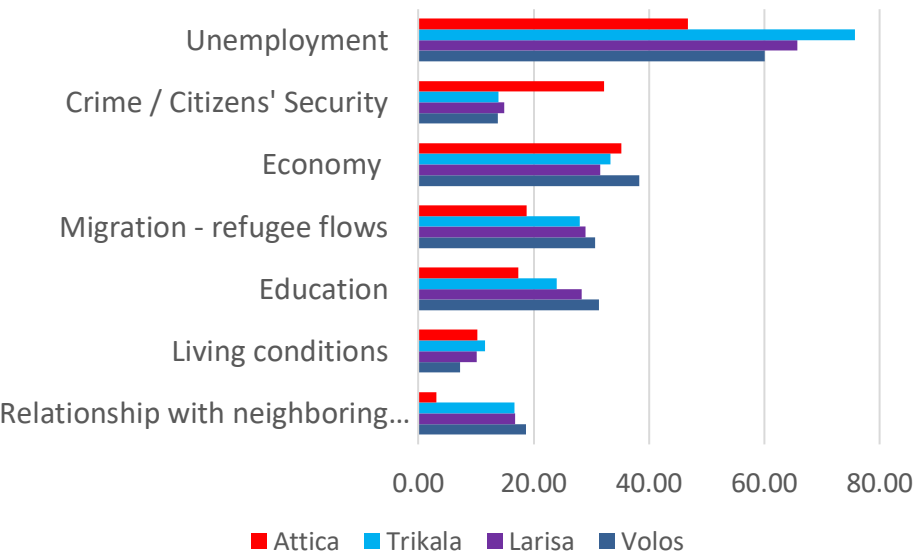
diaNOEsis



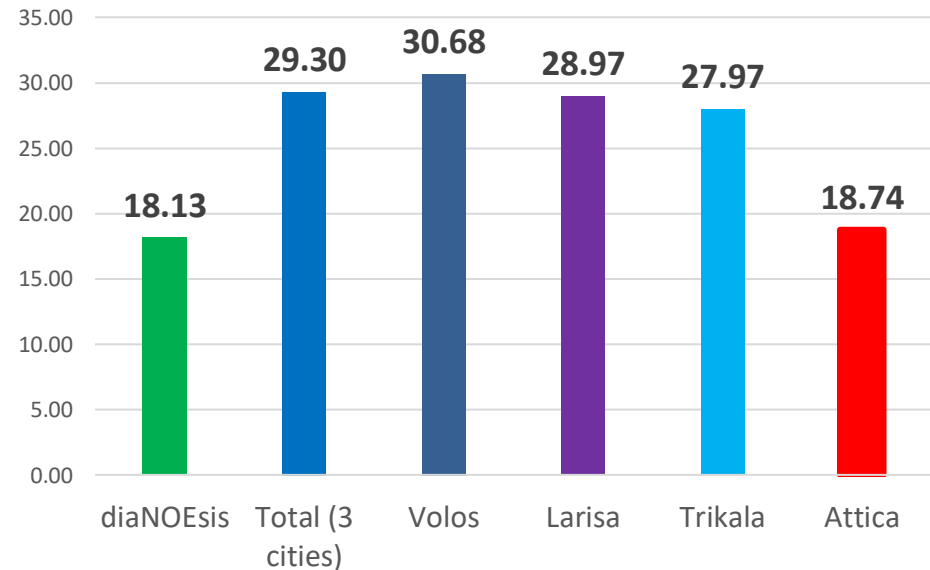
Total (3 cities)



Cities - regions



Migration - refugee flows

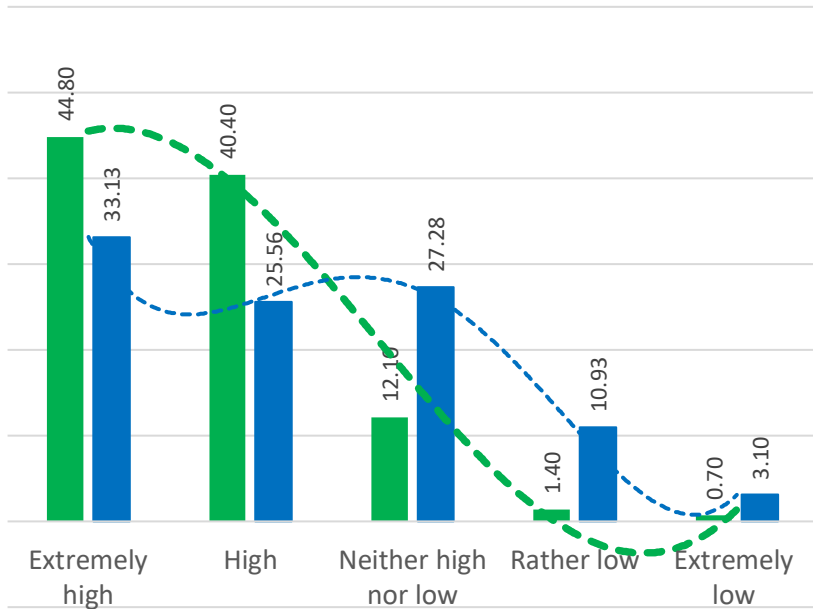


# Comparative analysis – Question 2

**Question 2:** In your opinion, the number of immigrants in Greece is:

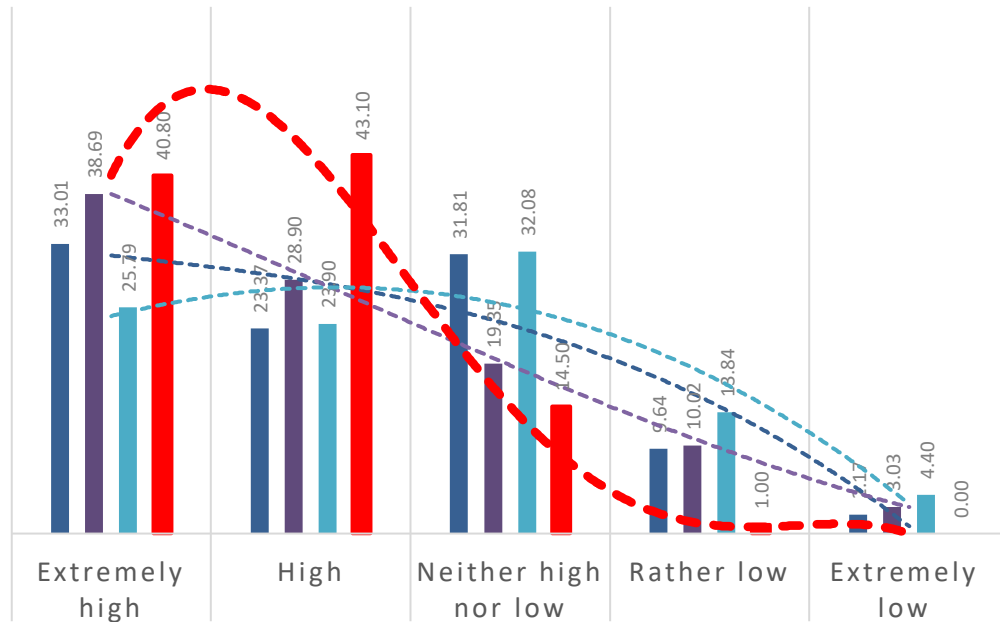
NUMBER OF IMMIGRANTS IN GREECE IS:

■ diaNEOsis      ■ Total (3 cities)  
- - - Poly. (diaNEOsis)      - - - Poly. (Total (3 cities))



NUMBER OF IMMIGRANTS IN GREECE IS:

■ Volos      ■ Larisa      ■ Trikala      ■ Attica  
- - - Poly. (Volos)      - - - Poly. (Larisa)      - - - Poly. (Trikala)      - - - Poly. (Attica)



	diaNEOsis	Total (3 cities)	Volos	Larisa	Trikala	Attica
Extremely high	44.80	33.13	33.01	38.69	25.79	40.80
High	40.40	25.56	23.37	28.90	23.90	43.10
Neither high nor low	12.10	27.28	31.81	19.35	32.08	14.50
Rather low	1.40	10.93	9.64	10.02	13.84	1.00
Extremely low	0.70	3.10	2.17	3.03	4.40	0.00

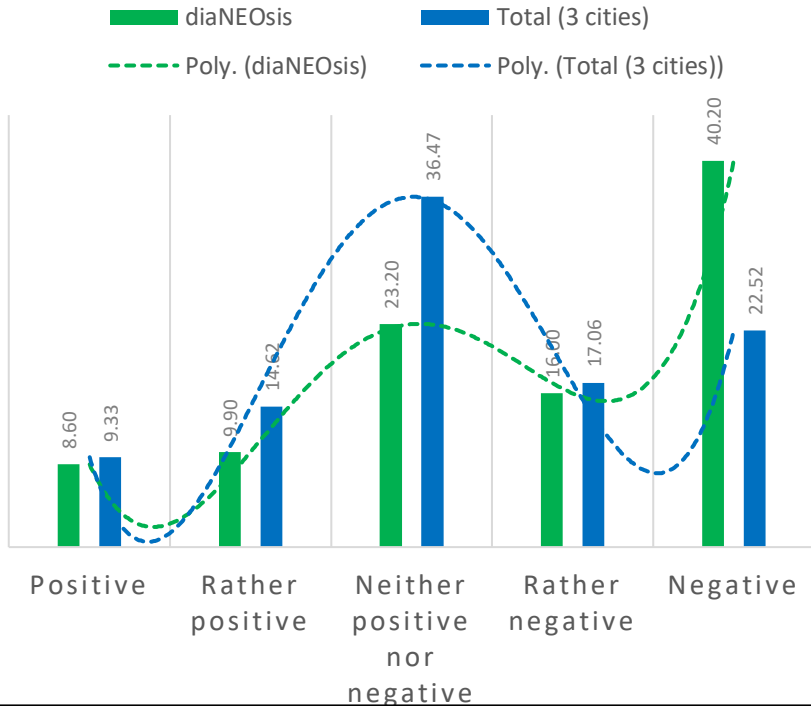
XX.X = maximum



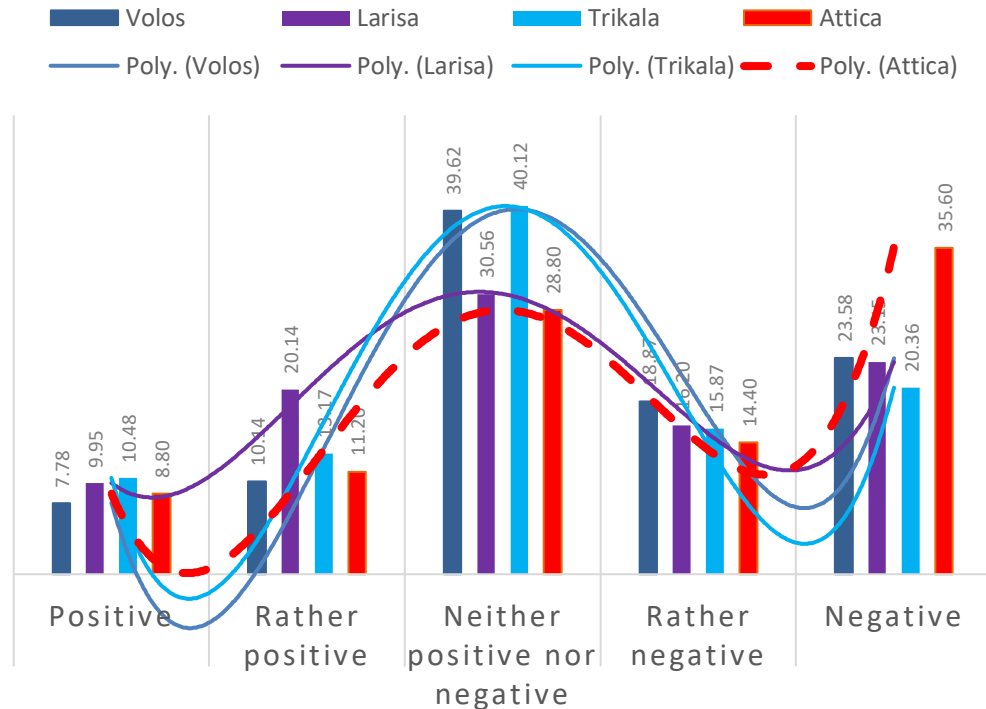
# Comparative analysis – Question 3

**Question 3:** What is the impact of immigrants on the Greek economy?

**IMPACT OF IMMIGRANTS ON THE GREEK ECONOMY**



**IMPACT OF IMMIGRANTS ON THE GREEK ECONOMY**



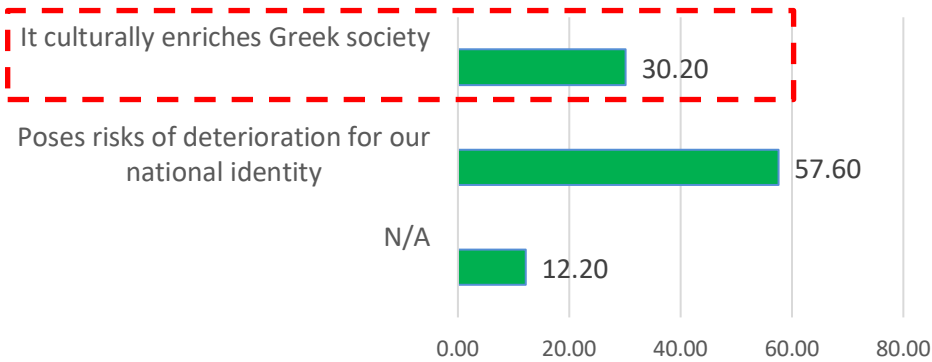
	diaNEOsis	Total (3 cities)	Volos	Larisa	Trikala	Attica
Positive	8.60	9.33	7.78	9.95	10.48	8.80
Rather positive	9.90	14.62	10.14	20.14	13.17	11.20
Neither positive nor negative	23.20	36.47	39.62	30.56	40.12	28.80
Rather negative	16.00	17.06	18.87	16.20	15.87	14.40
Negative	40.20	22.52	23.58	23.15	20.36	35.60

XX.X = maximum

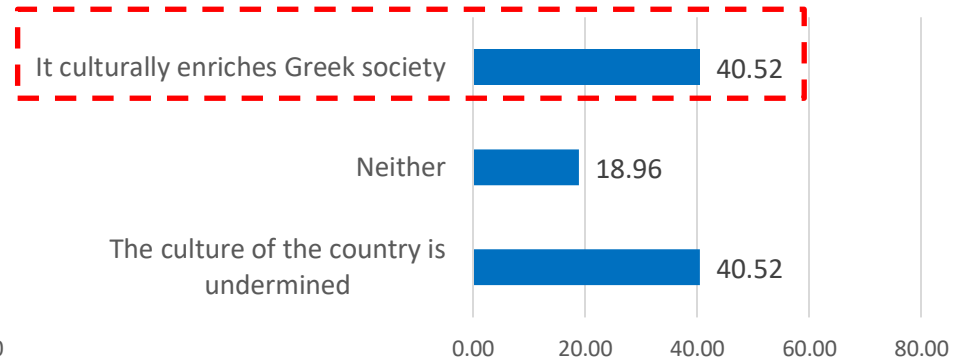
# Comparative analysis – Question 4

**Question 4:** Do you consider that the presence of immigrants in Greece culturally enriches Greek society?

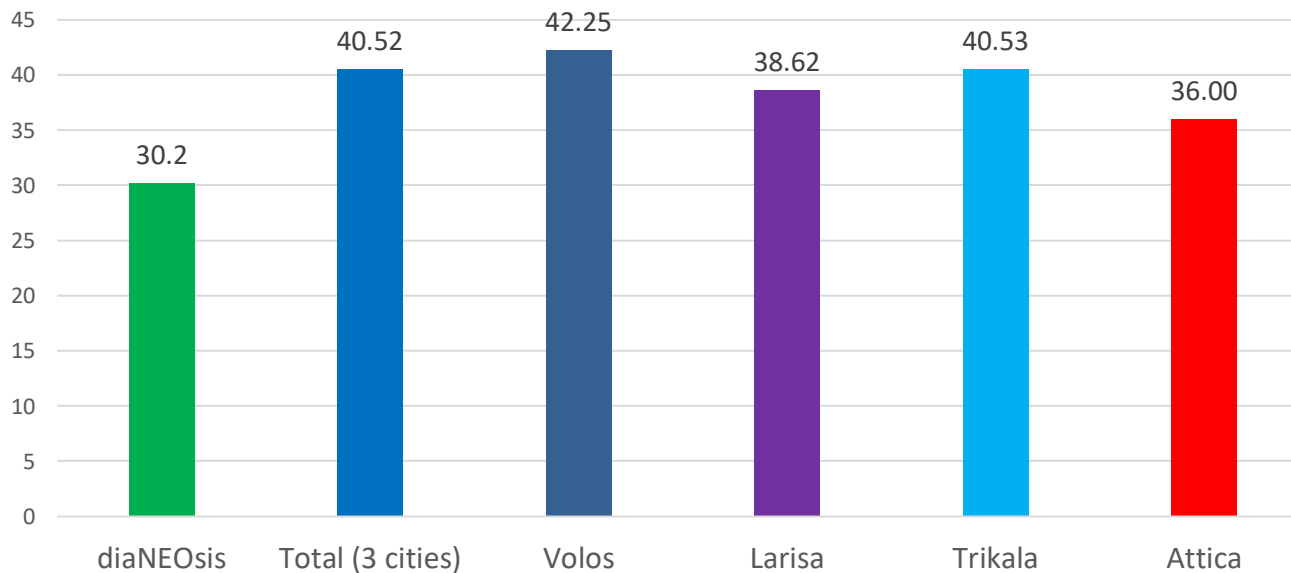
diaNOEsis



Total (3 cities)



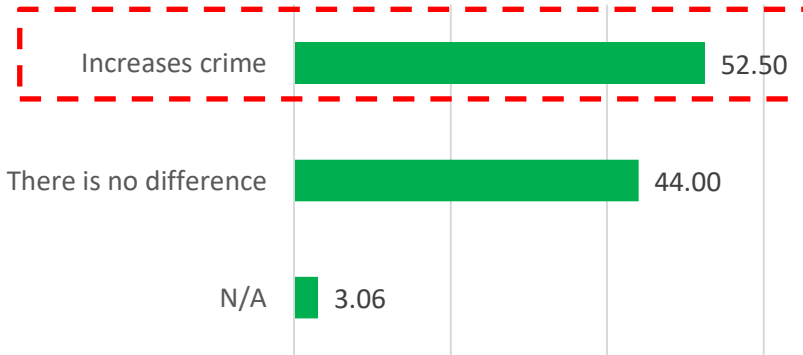
It culturally enriches Greek society



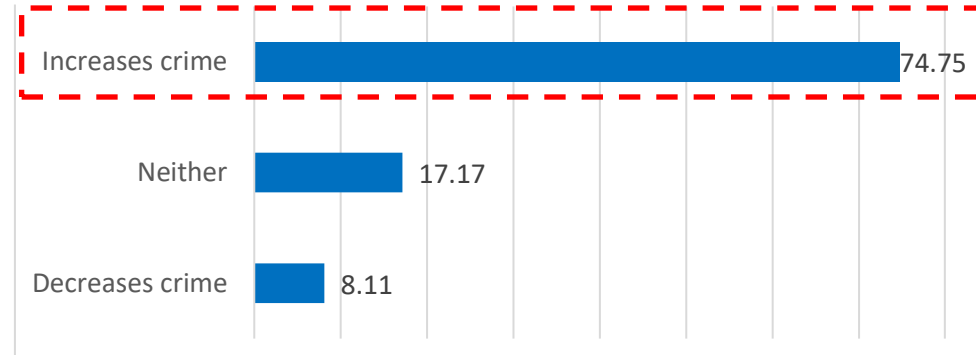
# Comparative analysis – Question 5

**Question 5:** Do you consider that the presence of immigrants in Greece increases crime ?

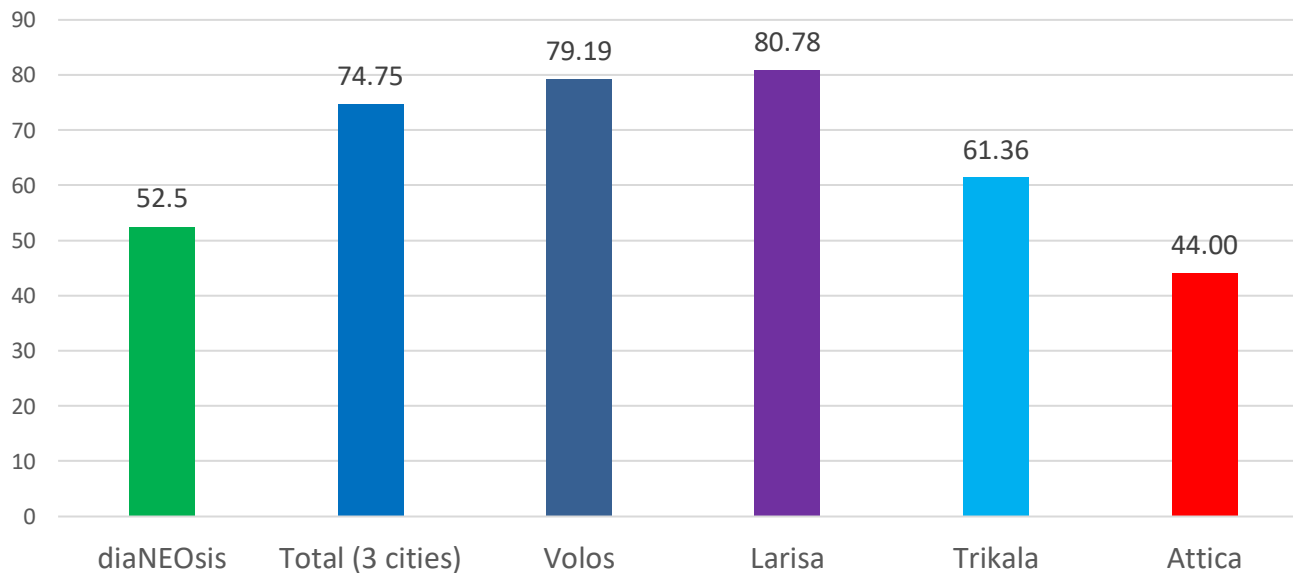
diaNEOsis



Total (3 cities)



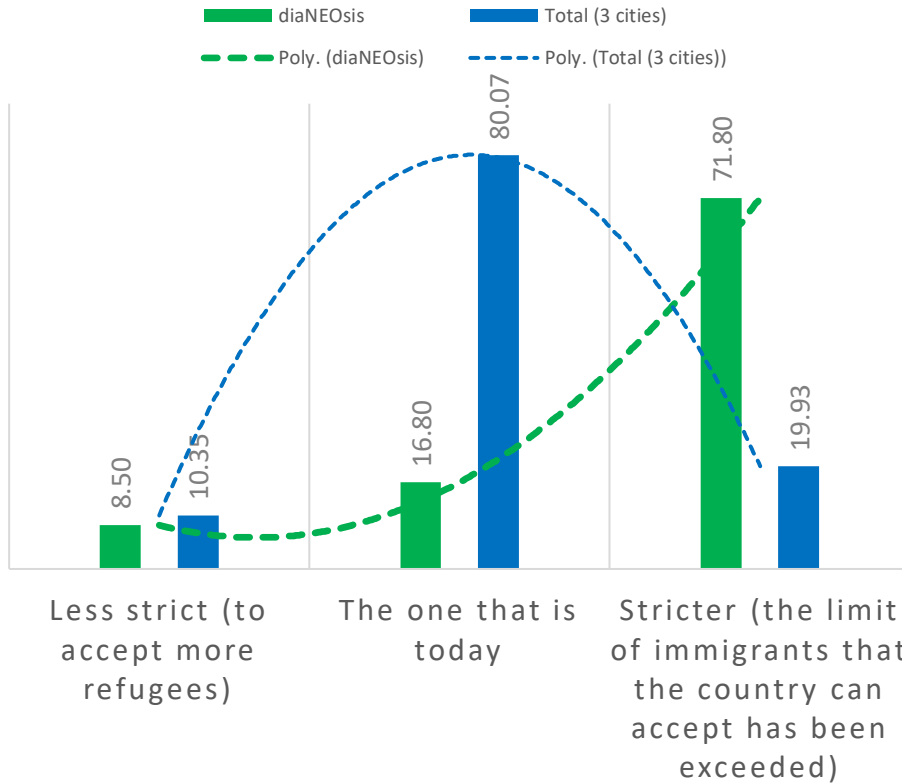
Increases crime



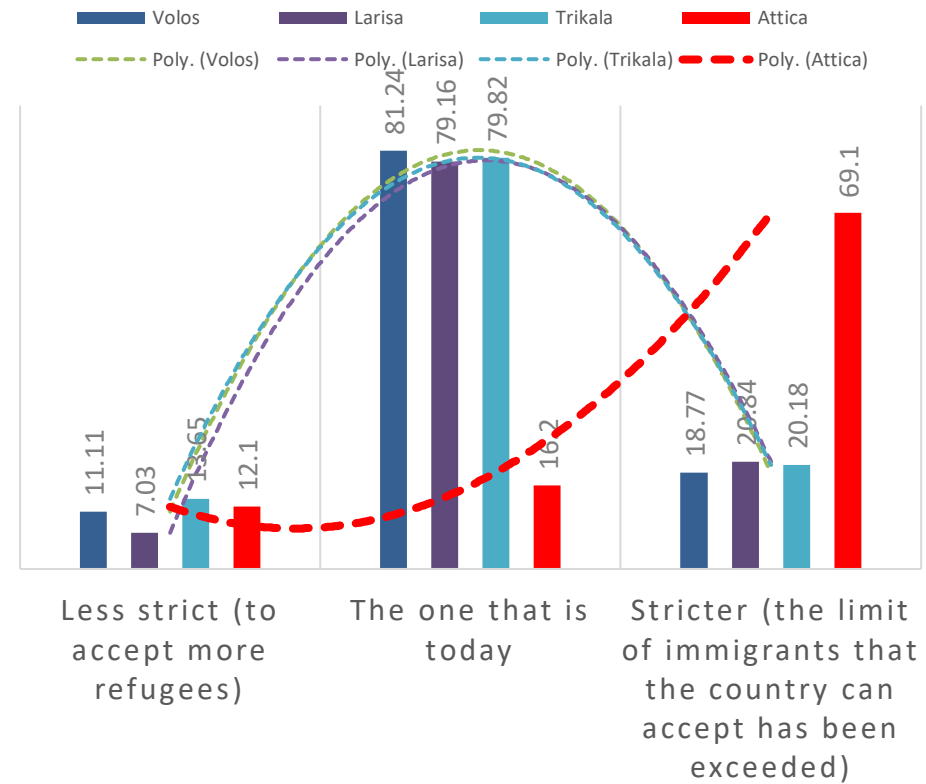
# Comparative analysis – Question 6

**Question 6:** Do you think that Greece's attitude towards dealing with refugee flows should be:

GREECE'S ATTITUDE TOWARDS REFUGEE FLOW



GREECE'S ATTITUDE TOWARDS REFUGEE FLOW



	diaNEOsis	Total (3 cities)	Volos	Larisa	Trikala	Attica
Less strict (to accept more refugees)	8.50	10.35	11.11	7.03	13.65	12.1
The one that is today	16.80	<b>80.07</b>	<b>81.24</b>	<b>79.16</b>	<b>79.82</b>	16.2
Stricter (the limit of immigrants that the country can accept has been exceeded)	<b>71.80</b>	19.93	18.77	20.84	20.18	<b>69.1</b>

## The current work brings up a set of useful general conclusions:

1. There is a lack of adequate relevant literature regarding the views of native population towards the issues of migration and management of refugee flows.
2. The existing literature is primarily based on researches conducted by NGO's or other organizations and rather lacks a coherent approach.
3. The last point poses serious shortcomings and limitations for comparative analysis of different researches.

## Regarding the results of the comparative analysis and an answer to the research question.

### *Do localities hold different positions towards immigrants –refugees compared to national (Athens skewed) position?*

It seems that attitudes towards immigrants and refugees do not distinguish due to differences in age, gender, education and income level. Political stance seems to be of some importance (only) in certain instances.

*(This is also congruent with further results of our analysis which are not presented here.)*

On the other hand, it is suggested that **there is divergence** between the views expressed by people in different localities - small and medium cities compared to Athens - regarding immigrants and refugees. Thus, future research should be more sensitive in considering the specificities of localities, in order to provide more informed and accurate policy recommendations.

# Thank you for your attention

“This research is co-financed by Greece and the European Union (European Social Fund- ESF) through the Operational Programme «Human Resources Development, Education and Lifelong Learning 2014-2020» in the context of the project *“The integration of refugees into local society: the case of small and medium-sized cities”* (MIS 5048960).”



**Operational Programme**  
**Human Resources Development,**  
**Education and Lifelong Learning**  
Co-financed by Greece and the European Union

